

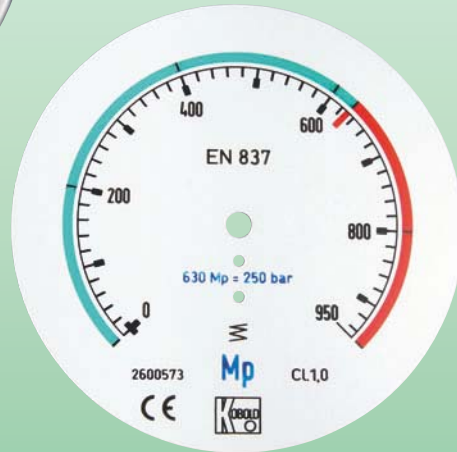


Zertifiziertes
QM-System
DIN EN ISO 9001
Zertifikat-Nr. 01017

Options for Pressure Gauges



measuring
•
monitoring
•
analysing



- Marking and trailing pointer
- Housing designs
- Screws
- Special connections
- Special scales, high precision scale
- Calibration protocols



KOBOLD companies worldwide:

ALGERIA, ARGENTINA, AUSTRALIA, AUSTRIA, BELGIUM, BULGARIA, CANADA, CHILE,
CHINA, COLOMBIA, CZECH REPUBLIC, DOM. REPUBLIC, EGYPT, FRANCE, GERMANY,
INDIA, INDONESIA, IRAN, ITALY, MALAYSIA, MEXICO, MOROCCO, NETHERLANDS,
PERU, POLAND, SINGAPORE, SLOVAKIA, SPAIN, SWITZERLAND, THAILAND, TUNESIA,
UNITED KINGDOM, USA, VENEZUELA, VIETNAM

KOBOLD Messring GmbH
Nordring 22-24
D-65719 Hofheim/Ts.
☎ +49(0)61 92 299-0
☎ +49(0)61 92 23398
E-Mail: info.de@kobold.com
Internet: www.kobold.com

Model:
MAN-
OPTIONS

Housing diameter	NG 63	NG 80	NG 100	NG 160		
Model	MAN-RD	MAN-RE	MAN-RF MAN-PF	MAN-RG MAN-PG	MAN-F	MAN-K
	Code will be attached to the pressure gauge's order code (Example: MAN-RD21 AD A)					
Special Pointer						
Marking pointer, red, rear plate, adjustable	A	A	A	A	A	A
Trailing pointer, unfilled housing	B1	B1	B1	B1	B1	B1
MIN-/MAX-Trailing pointer, unfilled housing	B2	B2	B2	B2	B2	B2
Trailing pointer, filled housing	C1	C1	C1	C1	C1	C1
MIN-/MAX-Trailing pointer, filled housing	C2	C2	C2	C2	C2	C2
Housing designs						
Cover ring from st. steel 1.4301 for aluminium housing	D	D	D	D	D	D
Front flange, from st. steel 1.4301	-	-	F	F	F	F
Front flange, chrome plated	-	-	G	G	G	G
Strap at rear for NG100, st. steel housing	-	-	H	-	-	-
Back flange	-	-	I	I	I	I
Triangle front ring	M	M	M	M	M	M
Screw						
Brass Bore hole 0.8 mm	L1	L1	L1	L1	L1	L1
Brass Bore hole 0.5 mm	L2	L2	L2	L2	L2	L2
Brass Bore hole 0.6 mm	L3	L3	L3	L3	L3	L3
St. steel Bore hole 0.8 mm	N1	N1	N1	N1	N1	N1
St. steel Bore hole 0.5 mm	N2	N2	N2	N2	N2	N2
St. steel Bore hole 0.6 mm	N3	N3	N3	N3	N3	N3
Special versions						
Spring loaded zero-stop + throttle	O	O	O	O	O	O
Unit oil-free and degreased	PF	PF	PF	PF	PF	PF
Unit silicone free	PS	PS	PS	PS	PS	PS
Unit vacuum safe	Q	Q	Q	Q	Q	Q
Safety glass, made of laminated glass	R	R	R	R	R	R
Special connections						
Brass M20x1.5	S	S	S	S	S	S
St. steel M20x1.5	T	T	T	T	T	T
Scales						
Special scales	U	U	U	U	U	U
Precision scale knife edge pointer DIN 16123/BL2	V	V	V	V	V	V
Marking coloured marking	W	W	W	W	W	W
Scales with company logo, one-time	X	X	X	X	X	X
Printed block artwork (per scale)	Z1	Z1	Z1	Z1	Z1	Z1
Printed block artwork (per scale) for neutral scale > 25 pcs. free of charge	Z2	Z2	Z2	Z2	Z2	Z2
Protocols and certificates						
Calibration protocol 5 measuring points	1	1	1	1	1	1
Calibration protocol 10 measuring points	2	2	2	2	2	2
DKD-certificate	3	3	3	3	3	3
Governmental approved calibration (< 400 bar)						
Cal. insignia class 1,0 cal. protocol	4	4	4	4	4	4
Cal. insignia class 0,6 cal. protocol	5	5	5	5	5	5
Governmental approved calibration (≥ 400 bar)	6	6	6	6	6	6

Marking pointer/trailing pointer



- Also as twofold version with a fixed and loose adjustment knob
- with a fixed and loose adjustment knob

Front flange for aluminium-housing



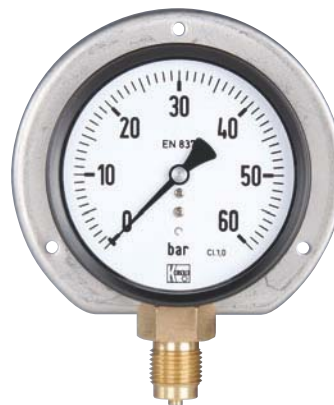
Front flange for stainless steel housing



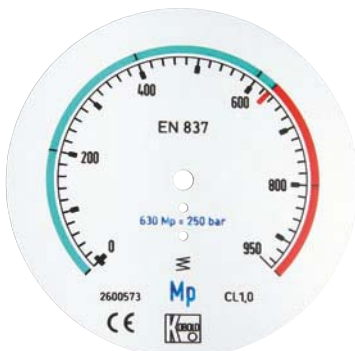
Triangle front ring



Back flange



Special scale



- multicolour
- Customer logo
- Up to four scales on one dial (similar to the pressure gauge used in refrigeration)
- Measuring point identification
- Special measuring ranges e.g.: -0.5...+0.5 bar
- Converted readings e.g.: kg, t (tons), m

Dimensions

Back flange / strap at rear

Code	NG	G	H	L
MAN-RF 22/26/72/76/24/74/28/78	100 mm st. steel	133	54	6x LK 116
MAN-RF 32/62/34/64	100 mm aluminium	133	44	6x LK 116
MAN-RG 22/26/72/76/24/74/28/78/28K/78K/32/62/34/64	160 mm st. steel	215	56	6x LK 178
MAN-RG 32/62/34/64	160 mm aluminium	215	49	6x LK 178

